

Bilby Mask Instructions

Imagine your classroom full of bilbies.
Colour in your bilby and make it your own unique creation.

Creating the Ears:

1. Cut on the dashed lines.
2. Fold "A" to "B" along the dotted line, not going past the end of the dotted line.
3. Use Sticky Tape, Glue or a Stapler to fix "A" and "B" together with letters facing each other.
4. Once folded, the folds face each other when fixing it to the mask.

Creating the Face:

1. Cut along the dashed lines on the outside of the face.
2. Cut out the eye holes on the inside of the dotted line.

Creating the Head Band:

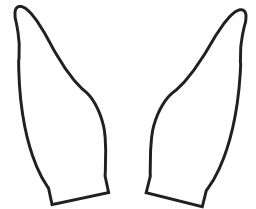
1. Cut along the middle dashed line.
2. Fold along the dotted lines on both parts of the head band.
3. Fix head band parts together along short side.
4. Adjust head band to fit head and join with the other side.

Putting the Mask Together:

1. Fix face to the head band, making sure the head band is comfortable on your head and you can see through the eye holes.
2. Fix ears to the head band, make sure the ears are pointing up and slightly angled inwards towards the base of the ears, and ensuring the folds of the ears are facing each other.

Extras:

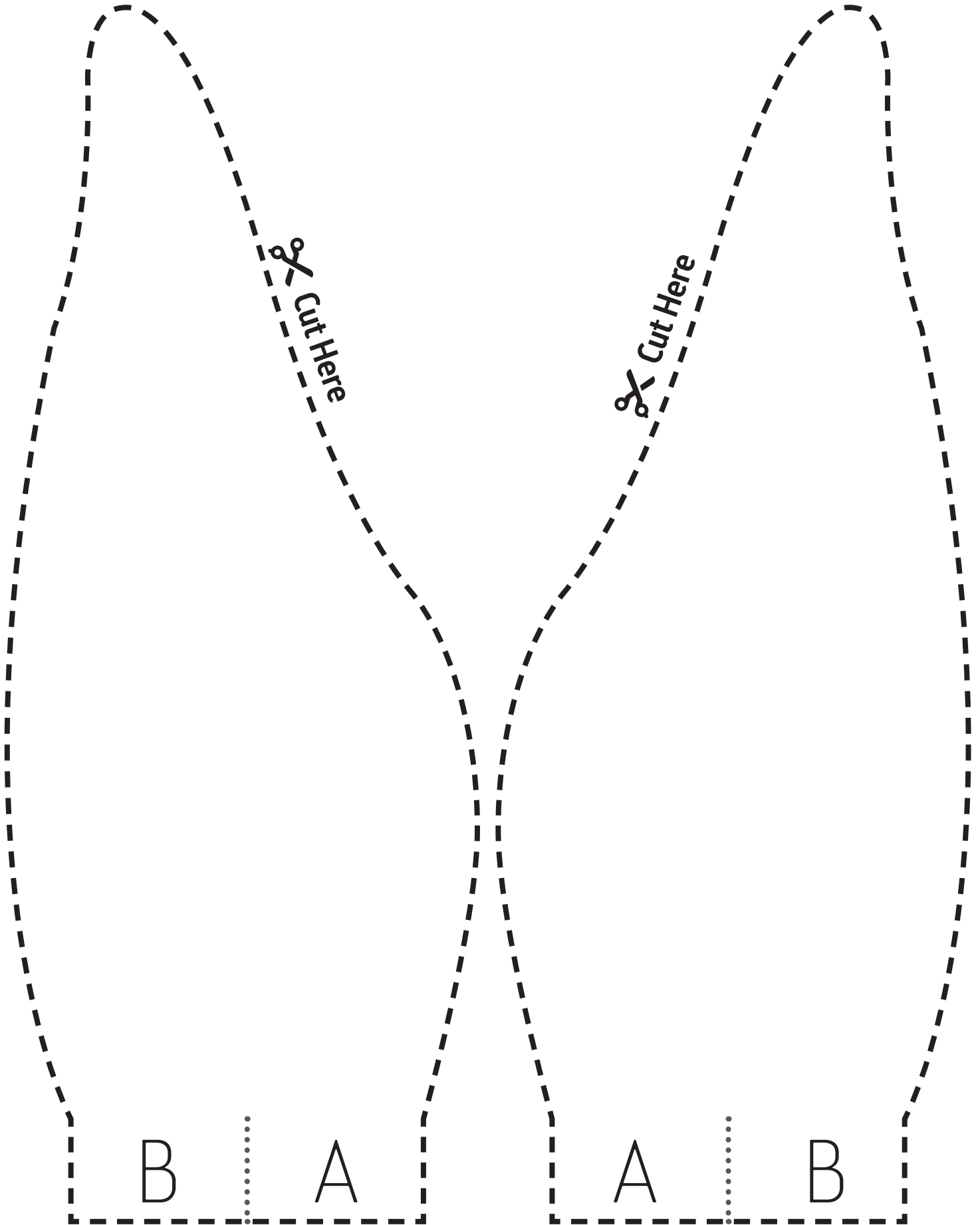
To make your bilby more unique, use pipe cleaners as whiskers around the nose.



Bilby Ears

Right Ear

Left Ear



 Cut Here

 Cut Here

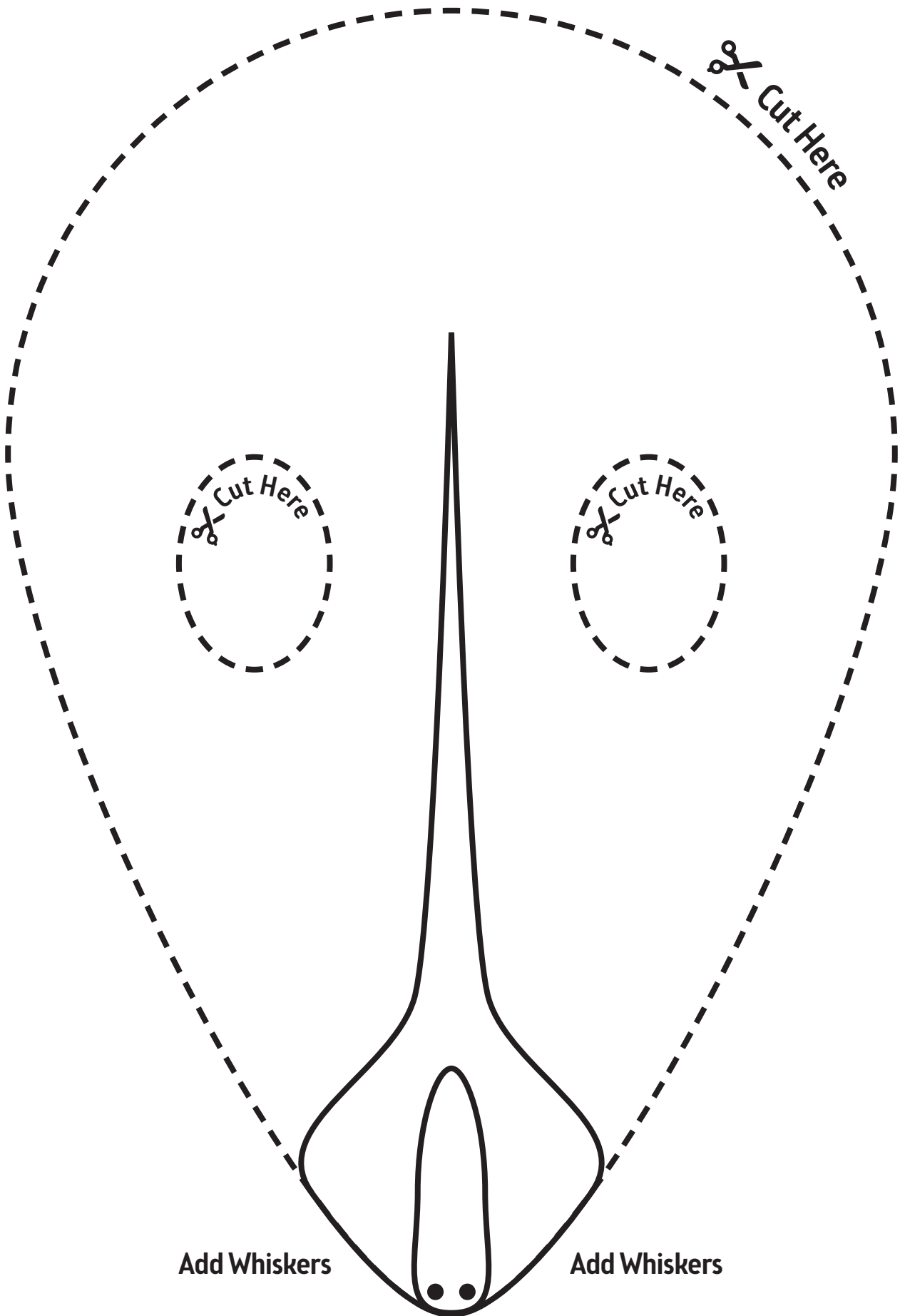
B

A

A

B

Bilby Face





Easter Bilby